

Because life is

Petty<sup>TM</sup>  
Real

25 Temple Street  
Colne  
BB8 9LG



## For Sale

- Three-bedroom end quasi-semi in Colne
- Ideal for families and first-time buyers
- Modern kitchen diner fitted within last 12 months
- Spacious and comfortable lounge
- Three well-proportioned bedrooms

## Offers Over £150,000

- Family bathroom on the first floor
- New windows and doors installed approx. 16 months ago
- New roof fitted around 9 months ago
- Gardens to the front and rear
- Move-in-ready home in a popular residential area



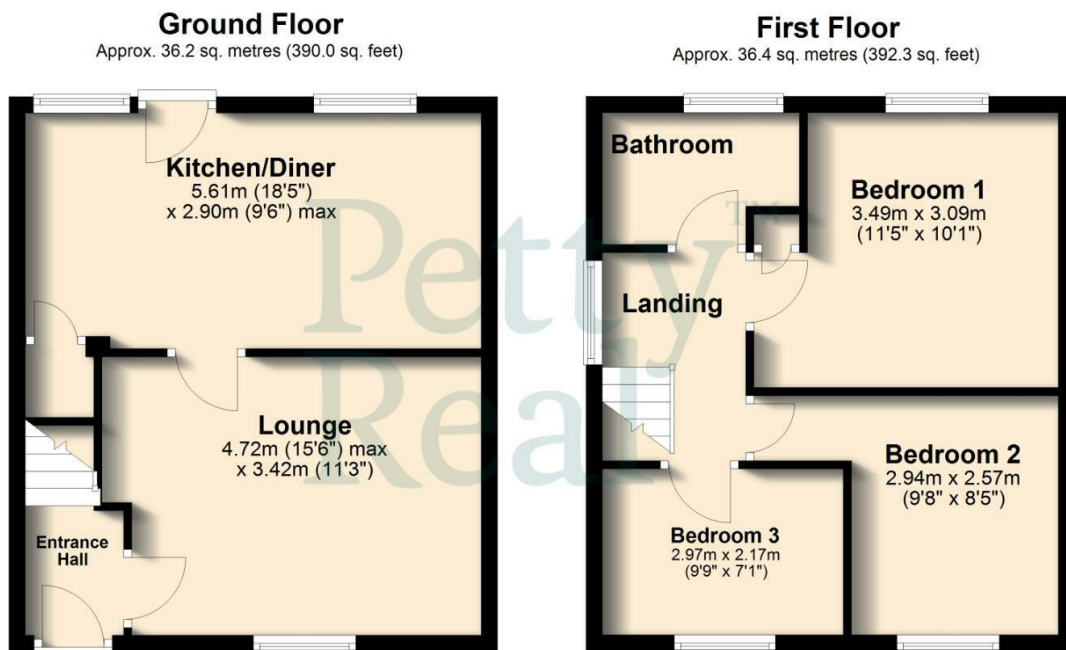
Situated in a well-established residential area of Colne, this appealing three-bedroom end quasi-semi offers a superb opportunity for families seeking a well-maintained and conveniently located home. The property has been significantly improved by the current owners over recent months, resulting in a modern and comfortable living environment ready for immediate occupation.

The ground floor comprises a welcoming lounge positioned to the front, providing a cosy and relaxing space for everyday living. To the rear, the modern kitchen diner—newly fitted within the last 12 months—offers an attractive and practical space for cooking, dining, and socialising. Its contemporary fixtures and layout make it ideal for busy family life.

On the first floor, the property provides three well-proportioned bedrooms, each offering flexibility for use as sleeping accommodation, a home office, or children's rooms depending on individual needs. The family bathroom serves the floor and completes the well-planned layout, making the home both functional and comfortable.

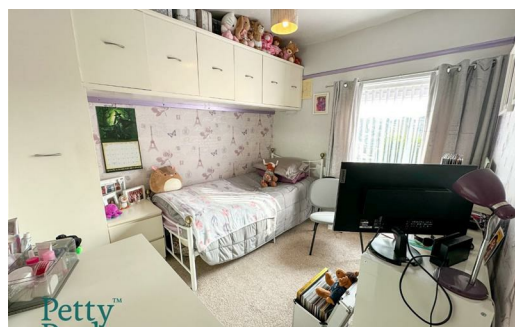
Externally, the property boasts gardens to both the front and rear, providing pleasant outdoor areas suitable for entertaining, gardening, or children's play. These spaces enhance the overall appeal and add valuable versatility to the home.

Further benefits include recently installed windows and doors, fitted approximately 16 months ago, and a new roof completed around 9 months ago, offering reassurance over future maintenance. Combined with its generous accommodation and family-friendly location, this property represents an excellent opportunity for those seeking a modernised and move-in-ready home in Colne.



Total area: approx. 72.7 sq. metres (782.2 sq. feet)

All floorplans provided are for guidance only. Please check all dimensions before making any decisions reliant upon them.  
Plan produced using PlanUp.



These particulars, whilst believed to be accurate are set out as a general outline only for guidance and do not constitute any part of an offer or contract. Intending purchasers should not rely on them as statements of representation of fact, but must satisfy themselves by inspection or otherwise as to their accuracy. No person in this firm's employment has the authority to make or give any representation or warranty in respect of the property.

11 Albert Road, Colne, Lancashire, BB8 0RY  
T. 01282 868686  
Colne.sales@pettyreal.co.uk

[www.pettyreal.co.uk](http://www.pettyreal.co.uk)